



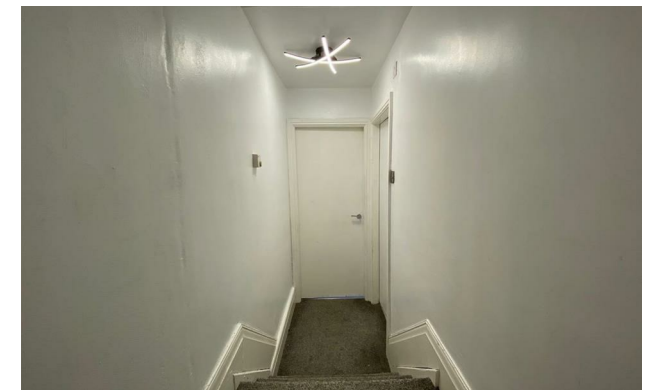
jordanfishwick

Kenwood Road
Stretford



Kenwood Road Stretford M32 8PT

£1,100 Per Calendar Month



The Property

***** AVAILABLE NOW ***** This spacious two double bedroom flat is located on a highly regarded road close to Longford Park. The property has a well maintained communal entrance and parking is available to the front of the property. On entry to the flat you have a large internal hallway which has stairs leading to the fully equipped large kitchen, the modern bathroom has shower over bath with enlarged bath by shower, there are two double bedrooms and a large lounge to the front of the property. The property is offered as unfurnished.

***** To arrange a viewing please call 0161 860 4444 *****

Directions

- Council Tax Band A - EPC C

- 2 Double Bedroom

- Unfurnished

- Parking Available

- Close to Chorlton and Transport links

- Spacious throughout

- Available Now

Postcode - M32 8PT

EPC Rating - C

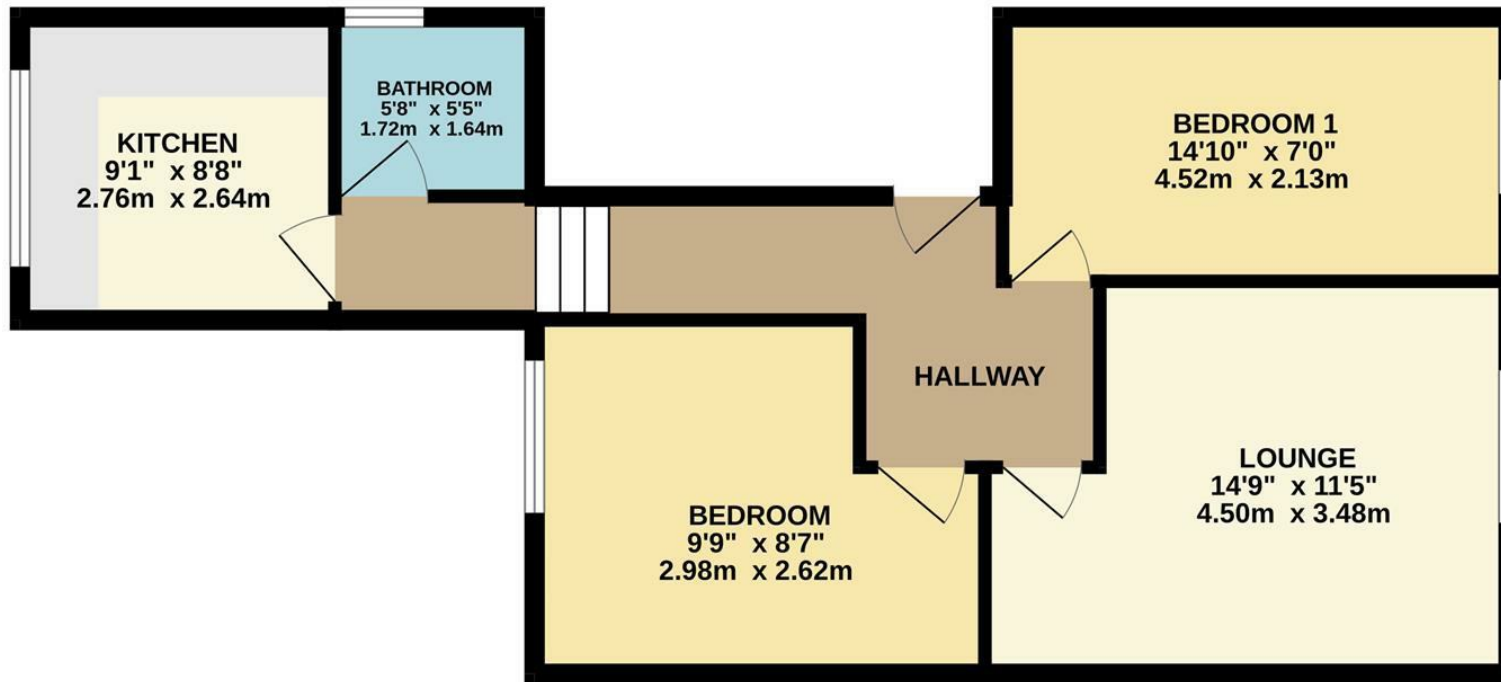
Floor Area - sq ft

Local Authority - Trafford

Council Tax - A



FIRST FLOOR
594 sq.ft. (55.1 sq.m.) approx.



TOTAL FLOOR AREA : 594 sq.ft. (55.1 sq.m.) approx.

Whilst every attempt has been made to ensure the accuracy of the floorplan contained here, measurements of doors, windows, rooms and any other items are approximate and no responsibility is taken for any error, omission or mis-statement. This plan is for illustrative purposes only and should be used as such by any prospective purchaser. The services, systems and appliances shown have not been tested and no guarantee as to their operability or efficiency can be given.
Made with Metropix ©2026



These particulars are believed to be accurate but they are not guaranteed and do not form a contract. Neither Jordan Fishwick nor the vendor or lessor accept any responsibility in respect of these particulars, which are not intended to be statements or representations of fact and any intending purchaser or lessee must satisfy himself by inspection or otherwise as to the correctness of each of the statements contained in these particulars. Any floorplans on this brochure are for illustrative purposes only and are not necessarily to scale.

Offices at: Offices at Chorlton, Didsbury, Disley, Hale, Glossop, Macclesfield, Manchester Deansgate, Manchester Whitworth Street, New Mills, Sale, Wilmslow and Withington

410-412 Barlow Moor Road, Chorlton, Manchester, M21

01618604444^{8AD}

chorlton@jordanfishwick.co.uk
www.jordanfishwick.co.uk